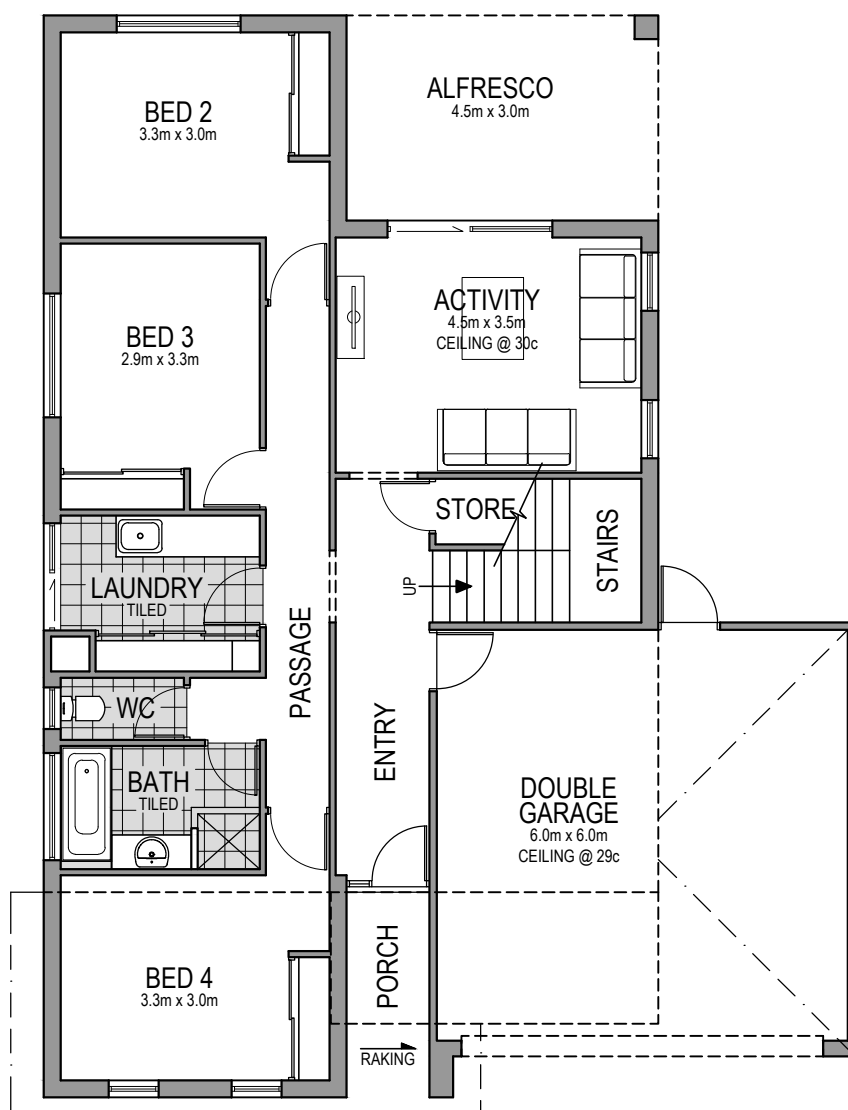
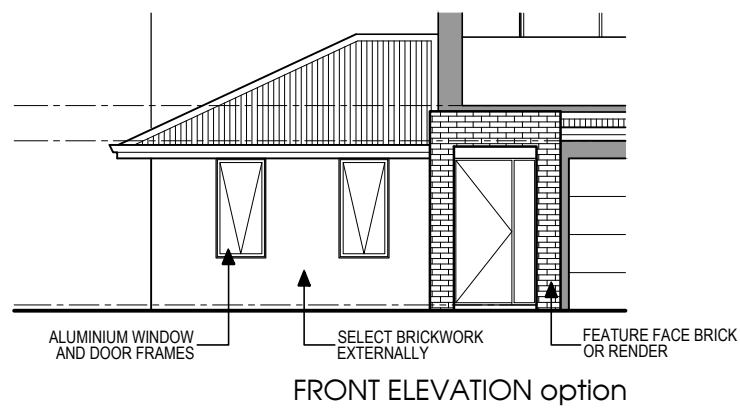
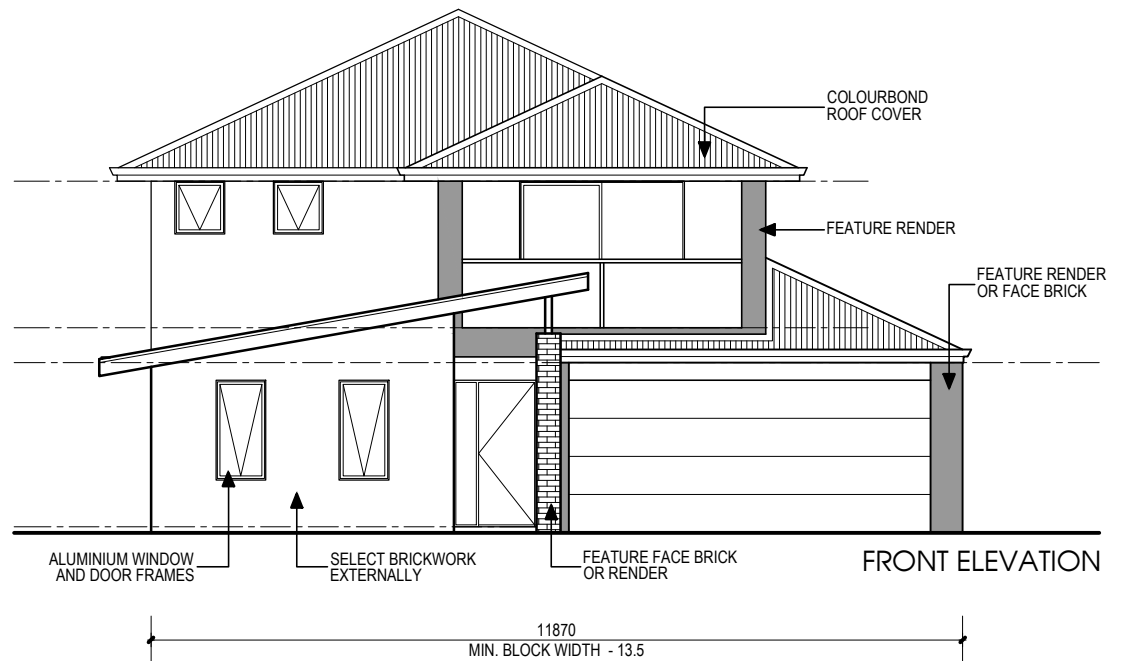


AREAS

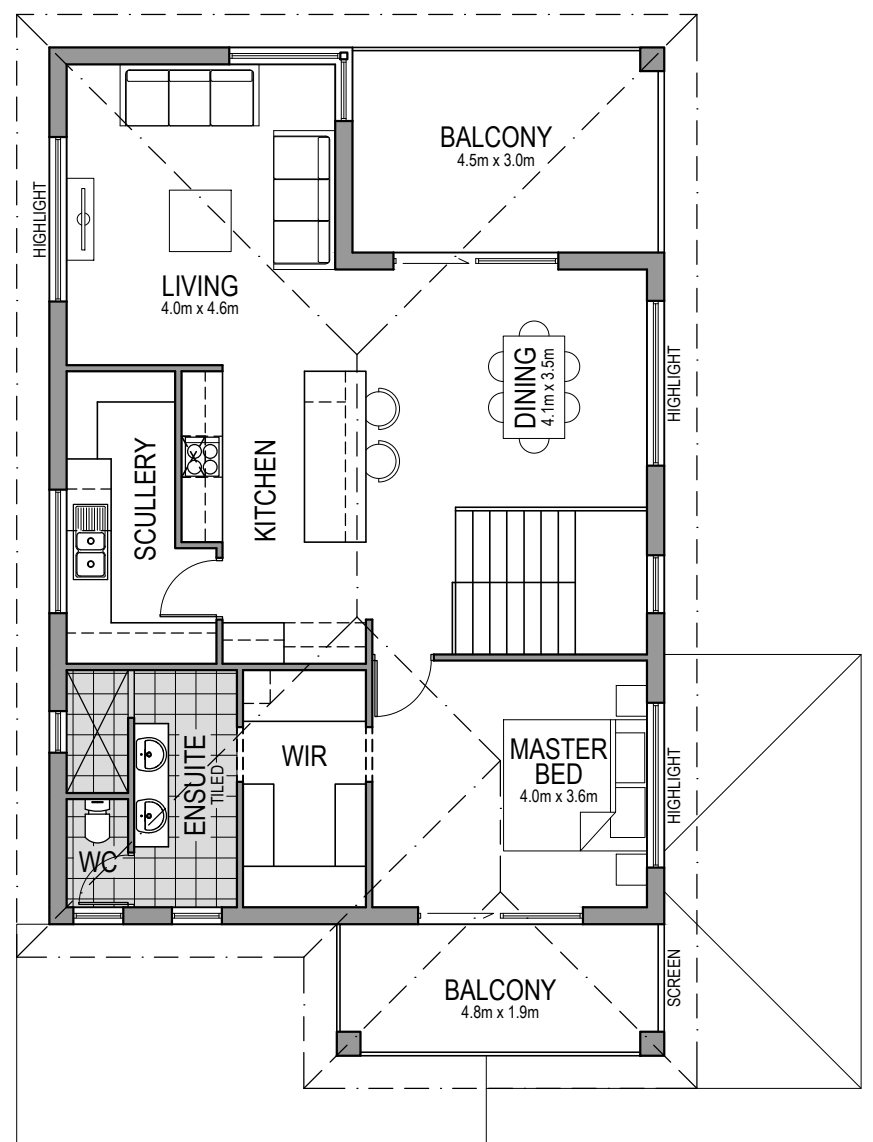
Ground Floor	102.51 m ²
Upper Floor	101.66 m ²
Garage	38.77 m ²
Alfresco	13.68 m ²
Porch	3.84 m ²
Rear Balcony	13.68 m ²
Front Balcony	9.20 m ²
TOTAL	283.34 m ²

FEATURES

- Adaptable 4x2 design
- Fits 13.5m frontage; or
 - 15m with 3m side access
- Spacious upstairs living with 2nd living area downstairs
- Family sized kitchen and scullery
- Private balcony to Master Bed
- 6 Star efficiency
 - R4.0 ceiling insulation
- Quality appliances
 - Oven, Cooktop, Rangehood
- Quality tapware and sanware
- Soft close cabinetwork
- Overhead cabinets
- Laundry chute from Master Bed
- Pivot door shower screen
- Built in robes with vinyl sliding door
- Door stops and seals
- Instantaneous gas hot water system
- Colorbond roof cover and plumbing
 - Skillion and traditional hip options



ground floor



upper floor